



You are here : [My evaluation](#) > [Evaluated in 2020-2022 \(group B\)](#) > [Study programme evaluation](#)

Study programme evaluation

Evaluation campaign 2020-2022 (group B)

Please note

In the context of the current health crisis, and further to its press release of 14 April, Hcéres has specified the new dates for the Group B [evaluation schedule in a letter addressed to the institutions concerned, dated 11 June 2020.](#)

PART 1: EVALUATION PROCESS

The Group B process, from its launch to the transmission of evaluation reports, will cover the period from July 2020 to July 2021. The Hcéres external evaluation in Group B differentiates between the five following aspects.

1. The first (undergraduate) cycle of universities as a whole (without individual evaluation of study programmes).
2. The second (graduate) cycle of university programmes leading to master's degrees, i.e. study programmes leading to national master's degrees, other programmes leading to master's degrees apart from those accredited by the CTI (Commission for Engineering Qualifications) and CEFDG (Commission for Qualifications issued by Business Schools), programmes leading to advanced diplomas in health, the State diploma in midwifery, and the certificate of competency (certificat de capacité) for orthoptists. These study programmes will be grouped into fields of study, at the institutions' discretion,
3. Master's degrees for members of the teaching, education and training professions (Métiers de l'enseignement, de l'éducation et de la formation - MEEF) at Teaching, Education and Training Colleges (Ecoles supérieures du professorat, de l'éducation et de la formation (INSPÉ)).
4. Study programmes of schools of architecture (ENSA)
5. Other study programmes leading to bachelor's and master's degrees at art schools.

For each of these four categories, the reference documents and information provided are mentioned below.

Evaluation of first-cycle study provision (bachelor's degrees, vocational bachelor's degrees, other study programmes leading to bachelor's degrees) ▼

From the 2020-2021 wave of evaluations onwards, Hcéres will globally evaluate universities' policies with regard to the leadership, organization and quality of their undergraduate provision, and in light of public policies for higher

education (Law on Student Guidance and Success (Loi ORE), in particular).

Global evaluation in this context means that Hcéres will examine the institution's policy and actions related to the first cycle, rather than conducting individual evaluations of each study programme. Responsibility for the latter is left to the institution (self-evaluation process), with Hcéres at this level only asking for a description of the self-evaluation actions and a highly condensed presentation of the results of the self-evaluations of study programmes.

With regard to the institution's undergraduate policy and actions, the Hcéres evaluation items will broadly concern the following points:

- › Interaction with the secondary education sector, information for high-school students, families and the different types of higher education applicants.
- › The strategy and framework of the study programme provision.
- › Provision of support to help students succeed.
- › The measurement of student success and graduate outcomes.
- › Means and resources assigned to professors and researchers.
- › Internal evaluation of the quality of study programme provision.

The institution may, if it so wishes, develop other means of analysis as part of its undergraduate policy.

A panel of experts is responsible for the evaluation on the basis of the self-evaluation file provided by the institution. It draws up a single evaluation report on the institution's first cycle.

The institutions concerned shall provide a list of their accredited undergraduate study programmes leading to a bachelor's degree, by 06 March 2020 ("Formations2020" Excel file [to be downloaded here](#) and returned to the email address [Email](#)).

Reference documents to be consulted

- › [Processus d'évaluation par le Hcéres du 1er cycle des universités](#)
- › [Sommaire du dossier d'autoévaluation de l'établissement sur son 1er cycle](#)
- › [Synthèse de l'autoévaluation d'une formation de 1er cycle universitaire conduisant à un grade de licence](#)
- › [Référentiel Hcéres pour l'évaluation d'une formation conférant le grade de licence](#)

The procedures for the submission of data, certified by the institution's electronic signature, will be specified in Q1 2020.

Evaluation of second-cycle study programme provision (master's degrees, other study programmes leading to master's degrees)

The evaluation of second-cycle study programme provision is based on breaking down the provision into fields of study. This breakdown into fields of study is defined by the institution, at its own discretion, on the basis of its strategic, disciplinary or thematic strengths, and represents the institution's desire to structure its potential in terms of master's-level study programmes. A field may be presented by a single institution, jointly presented by several institutions, or it may be presented at the site level.

The evaluation phase for second-cycle study programme provision relies heavily on the self-evaluation system adopted by the institutions. This is an ex post evaluation of the study programme provision in the preceding period, together with the strategic, organisational and operational objectives for the next period and proposals for the development of the study programme provision.

For each field identified, the institution provides an overall evaluation file for the field, as well as a self-evaluation file for each second-cycle study programme leading to a master's degree registered in that field. A panel of experts is established for each field and is responsible for the evaluation of the field and all its study programmes. It writes an evaluation report for the field including an evaluation sheet for each study programme.

The institutions concerned shall provide a list of their accredited second-cycle study programmes leading to master's degrees, grouped into fields of study, by 06 March 2020 ("Formations2020" Excel file [to be downloaded here](#) and returned to the email address [Email](#)).

Reference documents to be consulted

- › [Le document introduisant le processus](#)
- › [Une documentation complète contenant les aides à la rédaction des dossiers et le\(les\) référentiel\(s\) d'évaluation \(format Zip\)](#)

Documents to be submitted on the PELICAN exchange platform

- › One evaluation file for each field of study between 11/09/2020 and 06/11/2020
- › One evaluation file for each study programme between 11/09/2020 and 06/11/2020

Study programmes leading to a master's degree for members of the teaching, education and training professions (MEEF) ▼

This evaluation concerns the four MEEF master's degree programmes offered by Teaching, Education and Training Colleges (INSPÉ). A self-evaluation file is required for each of these master's degree programmes (if they have been established), in addition to one document per INSPÉ on the management of these master's degree programmes. These documents concern all INSPÉ stakeholders and are submitted by the institution to which the INSPÉ belongs.

The institutions concerned shall include a list of their MEEF master's degree programmes ("Formations2020" Excel file [to be downloaded here](#) and returned to the email address [Email](#)).

Reference documents to be consulted

- › [Le document introduisant le processus](#)
- › [Une documentation complète contenant les aides à la rédaction des dossiers et le\(les\) référentiel\(s\) d'évaluation \(format Zip\)](#)

Documents to be submitted on the PELICAN exchange platform

- › One evaluation file for each MEEF master's degree programme between 11/09/2020 and 06/11/2020
- › One file on the management of MEEF master's degree programmes for each INSPÉ between 11/09/2020 and 06/11/2020

Study programmes of schools of architecture (ENSA) ▼

The study programmes delivered by certain schools (especially schools of architecture and/or landscape design) are not listed here because they are subject to a coordinated evaluation process involving an evaluation of the school and an evaluation of its study programmes. The documentation associated with this evaluation can be found in the ["Evaluation of Institutions"](#).

Other study programmes leading to bachelor's and master's degrees at art schools ▼

This evaluation concerns study programmes leading to the awarding of bachelor's degrees and master's degrees by institutions supervised by the French Ministry of Culture. This does not concern schools of architecture, which are subject to a different evaluation process.

The institutions concerned shall provide a list of their study programmes to be evaluated by 06 March 2020 (["HCERES- DEF- Formations Culture Art 2020" Excel file to be downloaded here](#) and returned to [the email address](#)).

Reference documents to be consulted

- › [Processus Hcéres d'évaluation et d'instruction de l'accréditation des formations de niveaux licence et master des établissements culture \(PDF\)](#)
- › [Aide à la rédaction du dossier d'autoévaluation des formations de niveaux licence et master des établissements culture \(Word\)](#)
- › [Dossier d'accréditation - Fiche de présentation d'une formation de niveaux licence ou master des établissements culture \(Word\)](#)
- › [Référentiel Hcéres pour l'évaluation d'une formation conférant le grade de licence \(PDF\)](#)
- › [Référentiel Hcéres pour l'évaluation d'une formation conférant le grade de master \(PDF\)](#)

Documents to be submitted on the PELICAN exchange platform

- › One evaluation file for each degree programme option (by 11/09/2020).
- › To coincide with the submission of their files via the PELICAN platform, the institution shall select examples of the students' output that are representative of their work (in duplicate, maximum of 3 different works per study programme; these works will not be returned to the schools and, apart from 3 copies, the works will not be handed out to the experts). They should be sent to the following address: Hcéres, Département des Formations, 2 rue Albert Einstein – 75013 Paris

PART 2: ACCREDITATION PROCESS

Following the evaluation of first-cycle and second-cycle study programme provision, institutions are asked to submit their application for accreditation for the next period to Hcéres. This file should naturally focus on the responses to be made to the problems listed by the experts when evaluating the study programme provision, and on the plans to restructure and create study programmes in the next period. A panel of experts who participated in the evaluations analyses this project and formulates an opinion which is sent to the DGESIP for the drafting of the accreditation instrument.

The schedule will be presented at a later date, for a process that will be implemented in the spring of 2021.

Reference documents to be consulted

- › [Le document introduisant le processus](#)
- › [Une documentation complète contenant les aides à la rédaction des dossiers \(format Zip\)](#)

These documents do not concern the MEEF master's degrees run by the INSPÉs, nor the study programmes of art schools and ENSAs.

Documents to be submitted on the PELICAN exchange platform

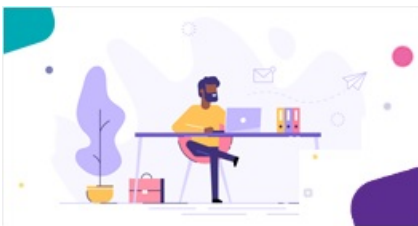
- › A single file per institution presenting the accreditation plan

CALENDRIER/ÉTAPES CLÉS



- Calendar of evaluations (group B)

SUBMIT THE EVALUATION FILES



- How do you submit the self-evaluation files?

INFOGRAPHIC



- What is evaluated by the Hcéres in 2020-2022 (group B) : see the infographic

CONTACTS



- Your contacts